



Compton House, Waterfront Drive,  
Chelsea, SW10

Asking Price £1,795,000, Leasehold

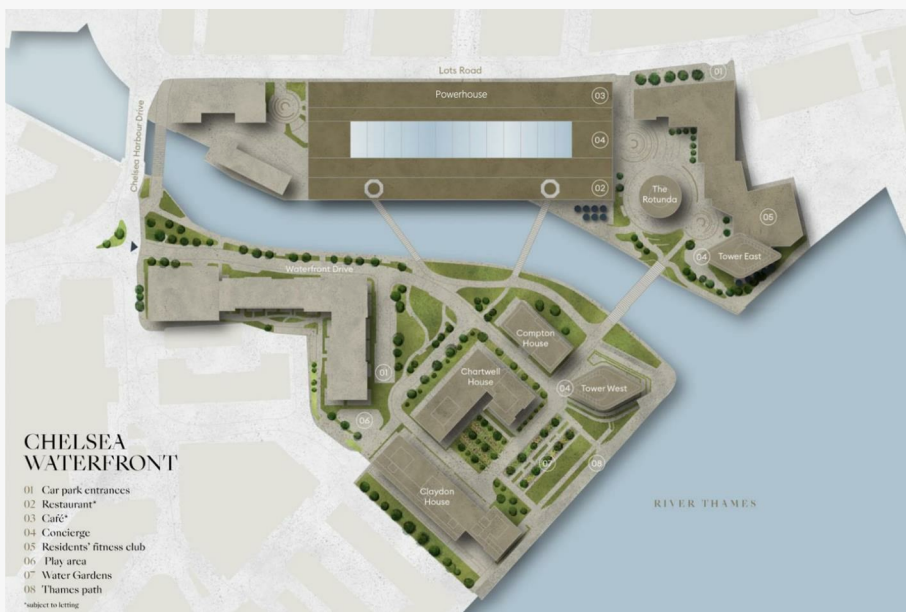
NAPIER WATT

T: 0207 935 0011  
E: [enquiries@napierwatt.co.uk](mailto:enquiries@napierwatt.co.uk)  
W: [napierwatt.co.uk](http://napierwatt.co.uk)

35 Berkeley Square, Mayfair, London, W1J 5BF







## Description

A beautifully interior-designed two-bedroom apartment situated on the third floor of the prestigious Chelsea Waterfront development, offering elevated, uninterrupted views of the River Thames. Perfect as a London home or an elegant pied-à-terre, this stylish residence combines luxury living with a prime riverside location.

### KEY FEATURES

- Located in the landmark Chelsea Waterfront development.
- Private large balcony with elevated river views – ideal for relaxing or entertaining.
- Access to world-class residents' facilities: gym, swimming pool, jacuzzi, sauna, and steam room.
- 24-hour concierge service and moments from local amenities and excellent transport.
- Bright, expansive open-plan reception room with space for both living and dining.
- Sleek modern kitchen with integrated appliances and breakfast bar.

EPC Rating B.

## Key Features

- 24 HOUR CONCIERGE
- GYMNASIUM
- SPA
- PASSENGER LIFT
- RIVERSIDE VIEWS
- SWIMMING POOL
- 2 BALCONIES

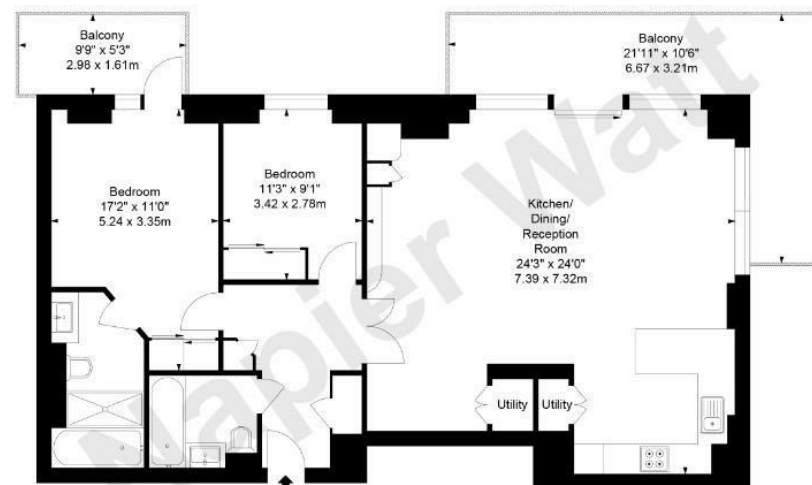
## Terms

Leasehold: 971 Years Remaining.  
 Total Payable £2,363.95 quarterly  
 Estimated Annually £ 9455.80 (excluding car space and ground rent)  
 Car space service charge estimated £699.72 per annum

## Compton House, SW10

Approx. Gross internal Area 1010 Sq Ft - 93.81 Sq M

Key :  
 CH - Ceiling Height



Not to scale, for guidance only and must not be relied upon as a statement of fact.  
 All measurements and areas are approximate only

IMPORTANT: We would inform prospective purchasers that these sales particulars have been prepared as a general guide only. A detailed survey has not been carried out, nor the services, appliances and fittings tested. Room sizes should not be relied upon for furnishing purposes and are approximate. If floor plans are included, they are for guidance only and illustration purposes only and may not be to scale. If there are any important matters likely to affect your decision to buy, please contact us before viewing the property.